

Quick Facts

Illinois Crash Information 2003

Emergency Vehicle Crashes

While crashes involving emergency vehicles are relatively rare, an evaluation of these motor vehicle incidents is valuable because these vehicles provide important services and must do so both expeditiously and in a safe manner.

	<u>All Crashes</u>	<u>Crashes Involving Emergency Vehicles</u>
Crashes:	437,289	4,403
Fatal Crashes:	1,308	11
Injury Crashes:	88,585	1,103
Total People Involved:	989,697 ^b	9,998 ^b
Total Fatalities:	1,454 ^b	12 ^b
Total Non-Fatal Injuries:	131,279 ^b	1,765 ^b

^aTotals include occupants and non-occupants; e.g. 989,697 total people = 980,219 occupants + 9,478 non-occupants

Just 4,403 (1.0%) of all 437,289 motor vehicle incidents in Illinois in 2003 involved emergency vehicles such as ambulance, fire and police vehicles.* Crashes involving emergency vehicles accounted for 12 (0.8%) of all 1,454 traffic fatalities.

Emergency Vehicles on Call

There were a total of 579 crashes in Illinois in 2003 specifically involving emergency vehicles on call. Just 3 fatalities resulted from these crashes, or 0.2% of all 1,454 traffic fatalities in Illinois in 2003.

Emergency Vehicle Types

More police vehicles were involved in crashes, fatal crashes and injury crashes than ambulance and fire vehicles.^{†,‡}

EMERGENCY VEHICLE INVOLVEMENT †	TOTAL CRASHES	FATAL CRASHES		INJURY CRASHES	
	#	#	%	#	%
Ambulance	585	1	(0.17)	116	(19.8)
Fire	469	0	(0.00)	73	(15.6)
Police	3,324	10	(0.30)	903	(27.2)
No Emergency Vehicle Involved	432,886	1,297	(0.30)	87,482	(20.2)

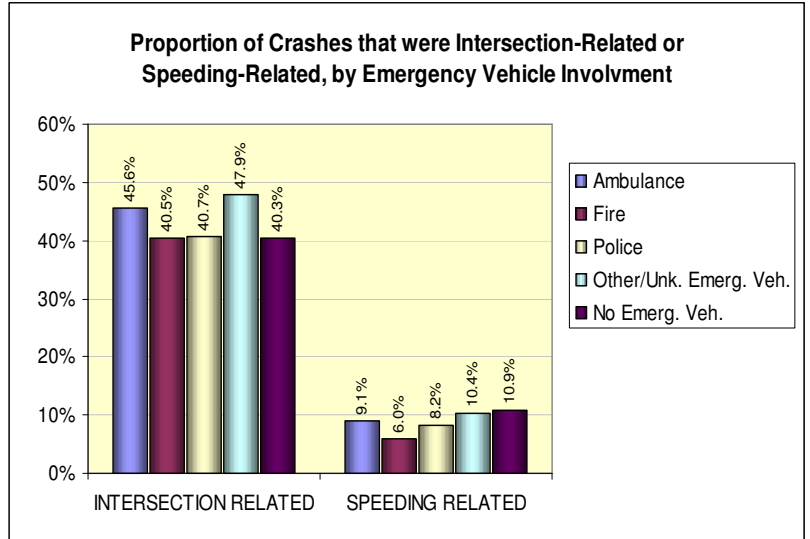
* Emergency vehicles were defined as ambulance, police and fire vehicles plus any vehicle whose use was as an emergency vehicle on call

† Where type of emergency vehicle was known; 1.1% of all emergency vehicles involved in crashes were emergency vehicles on call of unknown type

‡ A few crashes involved more than one type of emergency vehicle, so the totals for each type are not mutually exclusive

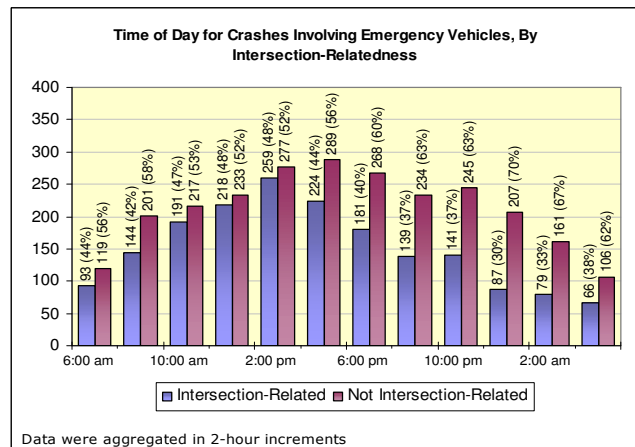
Intersection-Related and Speeding-Related Crashes

- Crashes involving emergency vehicles were slightly more likely to be intersection-related (1,825 of 4,403, or 41.5%) than other crashes (174,588 of 432,886, or 40.3%)
- However, they were less likely to be speeding-related[§] (357 of 4,403, or 8.1%) than other crashes (47,267 of 432,886, or 10.9%)
- Crashes involving emergency vehicles *on call* were more likely to be intersection-related (312 of 579, or 53.9%) than other emergency vehicle crashes (1,513 of 3,824, or 39.6%) and crashes in which no emergency vehicle was involved (174,588 of 432,886, or 40.3%).
- Crashes involving emergency vehicles *on call* were slightly less likely to be speeding-related (41 of 579, or 7.1%) than other emergency vehicle crashes (316 of 3,824, or 8.3%) and crashes in which no emergency vehicle was involved (47,267 of 432,886, or 10.9%).



Time of Day

- Crashes involving emergency vehicles peaked during the afternoon hours, with 12.2% of all such crashes occurring between 2:00 PM and 4:00 PM.
- 36.2% of emergency vehicle crashes between 6:00 pm and 6:00 am were intersection-related, compared with 45.8% at other hours.



Crashes Involving Police Evasion

- There were 643 crashes in Illinois in 2003 involving drivers trying to evade police vehicles.**
- These crashes represent 0.15% of all 437,289 crashes and 6 (0.46%) of all 1,454 fatal crashes in Illinois in 2003.
- 111 (17.3%) of these 643 crashes were also speeding-related.

[§] Speeding-related crashes were defined as crashes in which at least one driver in the crash was driving too fast for conditions or in which exceeding the speed limit or excessive speed for conditions was listed by police as a cause of the crash

** Police vehicles themselves were also involved in 104 (16.2%) of these 643 collisions