

Quick Facts

Illinois Crash Information 2004

School Transportation

Although national studies (such as the 2002 report "School Bus Safety: Crashworthiness Research" by the National Highway Traffic Safety Administration) verify statistically the safety of school bus transportation, any event involving these vehicles has the potential to affect the lives of many children.

	All Crashes	School Transportation-Related Crashes
Crashes:	433,035	2,285
Fatal Crashes:	1,224	0 ^a
Injury Crashes:	83,924	98 ^a
Total People Involved:	1,008,936 ^b	2,917 ^c
Total Fatalities:	1,355 ^b	0 ^c
Total Non-Fatal Injuries:	121,404 ^b	183 ^c

^a Numbers only reflect crashes in which fatality or non-fatal injury was specifically a child aged 18 or younger

^b Totals include occupants and non-occupants; e.g. 1,008,936 total people = 999,641 occupants + 9,295 non-occu

^c Numbers include children aged 18 or younger (passengers and non-occupants)

There were 2,285 school transportation-related crashes* in Illinois in 2004. These crashes accounted for 2 fatalities (0.1% of all 1,355 traffic fatalities in Illinois in 2004), neither of which occurred among children aged 18 or younger.

School Hours

School transportation related crashes were concentrated before and after typical school hours, with 1,415 (61.9%) of all 2,285 such crashes taking place either 7:00-8:59 am or 2:00-3:59 pm.

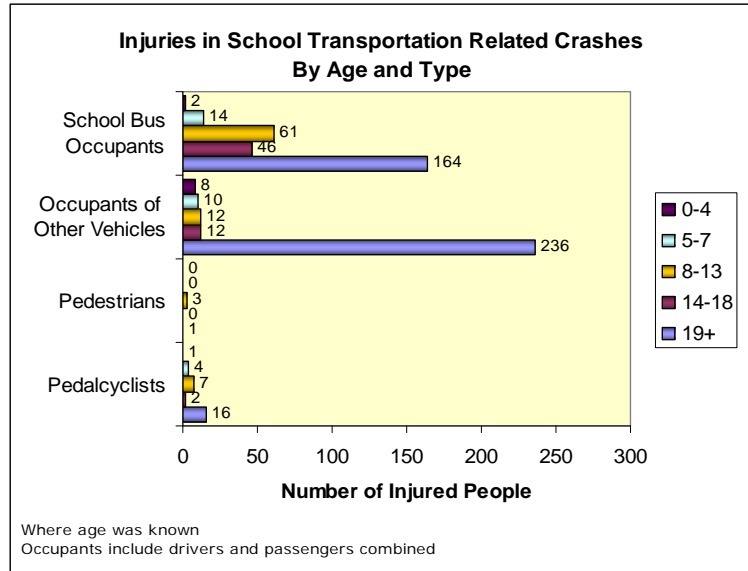
Time of Day	School Transportation Related Crashes	Injuries		Fatalities	
		All	School Age	All	School Age
midnight-6:59 am	111	31	3	0	0
7-7:59 am	360	97	34	0	0
8-8:59 am	311	82	21	0	0
9-9:59 am	100	35	3	0	0
10-10:59 am	71	26	8	0	0
11-11:59 am	101	20	5	0	0
noon-12:59 pm	92	23	4	0	0
1-1:59 pm	115	26	4	1	0
2-2:59 pm	280	108	44	0	0
3-3:59 pm	464	126	36	0	0
4-4:59 pm	148	45	11	0	0
5-11:59 pm	132	41	10	0	0
Total	2285	660	183	1	0

(Where time of day was known)

* Crashes were classified as school transportation-related if they involved direct contact with a school bus or vehicle being used as a school bus (including stopped school buses) or if they involved a vehicle passing a stopped school bus in a crash also involving a child non-occupant such as a pedestrian or pedalcyclist (aged 18 or younger)

Injured Occupants and Pedestrians

- Only 182 (30.4%) of the 599 occupants and pedestrians injured in school transportation related crashes were children aged 18 or younger
- Among the 182 children who were injured, 14 (7.7%) were pedalcyclists.
- 123 (67.6%) of the children who were injured in school transportation related crashes were occupants of buses or vehicles being used as buses.



Road Use and Geographic Facts

- 2,100 (91.9%) of all 2,285 school transportation-related crashes took place on roads or highways that were classified as "urban" use
- 1,252 (54.8%) of all 2,285 school transportation-related crashes took place in Cook County
 - In comparison, Cook County accounts for just 31.9% of the average vehicle miles traveled in Illinois[†]

	Crashes Involving School Transportation		Crashes Not Involving School Transportation	
	n	(%)	n	(%)
Chicago	747	(32.7%)	126,412	(29.3%)
Suburban Cook County	505	(22.1%)	89,926	(20.9%)
Chicago Collar Counties	519	(22.7%)	84,968	(19.7%)
Rest of State - Urban	325	(14.2%)	65,480	(15.2%)
Rest of State - Rural	189	(8.3%)	63,964	(14.8%)

Note: Counties were stratified according to criteria defined by the Behavioral Risk Factor Surveillance System for the Illinois Department of Public Health
 URL: <http://app.idph.state.il.us/brfss/default.asp>

[†] Source: Illinois Travel Statistics 2004, Illinois Department of Transportation