

Quick Facts

Illinois Crash Information 2004

Emergency Vehicle Crashes

While crashes involving emergency vehicles are relatively rare, an evaluation of these motor vehicle incidents is valuable because these vehicles provide important services and must do so both expeditiously and in a safe manner.

	All Crashes	Crashes Involving Emergency Vehicles
Crashes:	433,035	3,913
Fatal Crashes:	1,224	13
Injury Crashes:	83,924	990
Total People Involved:	1,008,936 ^a	9,779 ^a
Total Fatalities:	1,355 ^a	15 ^a
Total Non-Fatal Injuries:	121,404 ^a	1,602 ^a

^a Totals include occupants and non-occupants; 1,008,936 total people = 999,641 occupants + 9,295 non-occupants

Just 3,913 (0.9%) of all 433,035 motor vehicle incidents in Illinois in 2004 involved emergency vehicles such as ambulance, fire and police vehicles.* Crashes involving emergency vehicles accounted for 15 (1.1%) of all 1,355 traffic fatalities.

Emergency Vehicles on Call

There were a total of 577 crashes in Illinois in 2004 specifically involving emergency vehicles on call. Just 7 fatalities resulted from these crashes, or 0.5% of all 1,355 traffic fatalities in Illinois in 2004.

Emergency Vehicle Types

More police vehicles were involved in crashes, fatal crashes and injury crashes than ambulance and fire vehicles.^{†,‡}

EMERGENCY VEHICLE INVOLVEMENT †	TOTAL CRASHES	FATAL CRASHES		INJURY CRASHES	
	#	#	%	#	%
Ambulance	516	2	(0.39)	92	(17.8)
Fire	377	1	(0.27)	61	(16.2)
Police	2,954	9	(0.30)	821	(27.8)
No Emergency Vehicle Involved	429,122	1,211	(0.28)	82,934	(19.3)

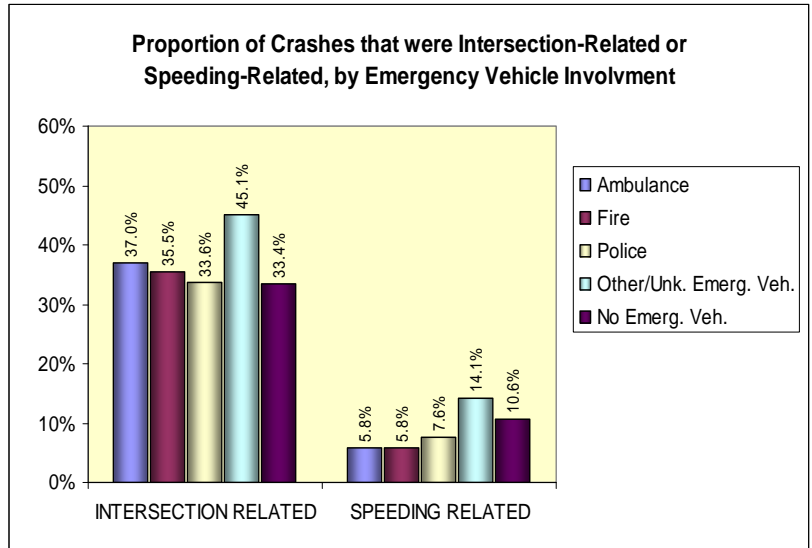
* Emergency vehicles were defined as ambulance, police and fire vehicles plus any vehicle whose use was as an emergency vehicle on call

† Where type of emergency vehicle was known; 1.8% of all emergency vehicles involved in crashes were emergency vehicles on call of unknown type

‡ A few crashes involved more than one type of emergency vehicle, so the totals for each type are not mutually exclusive

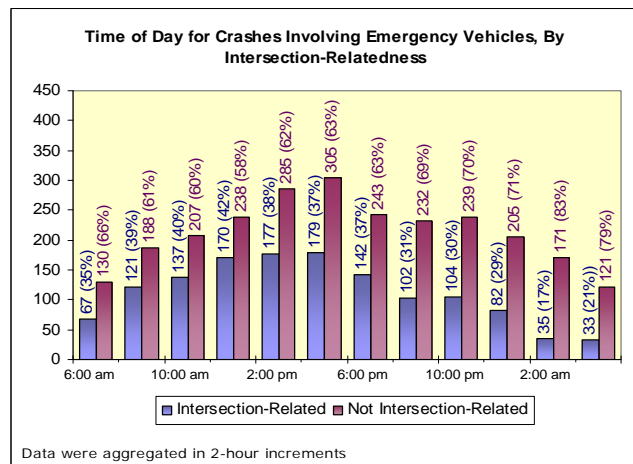
Intersection-Related and Speeding-Related Crashes

- Crashes involving emergency vehicles were about as likely to be intersection-related (1,349 of 3,913, or 34.5%) as other crashes (143,234 of 429,122, or 33.4%)
- However, they were less likely to be speeding-related⁵ (287 of 3913, or 7.3%) than other crashes (45,515 of 429,148, or 10.6%)
- Crashes involving emergency vehicles *on call* were more likely to be intersection-related (277 of 577, or 48.0%) than other emergency vehicle crashes (1,072 of 3,336, or 32.1%) and crashes in which no emergency vehicle was involved (143,234 of 429,122, or 33.4%)
- Crashes involving emergency vehicles *on call* were slightly less likely to be speeding-related (41 of 577, or 7.1%) than other emergency vehicle crashes (246 of 3,336, or 7.4%) and crashes in which no emergency vehicle was involved (45,515 of 429,148, or 10.6%)



Time of Day

- Crashes involving emergency vehicles peaked during the afternoon hours, with 12.4% of all such crashes occurring between 4:00 PM and 6:00 PM.
- 29.1% of emergency vehicle crashes between 6:00 pm and 6:00 am were intersection-related, compared with 38.6% at other hours.



Crashes Involving Police Evasion

- 630 crashes in Illinois in 2004 involved drivers trying to evade police vehicles**
- These crashes represent 0.15% of all 433,035 crashes and 7 (0.57%) of all 1,224 fatal crashes in Illinois in 2004
- 130 (20.6%) of these 630 crashes were also speeding-related

⁵ Speeding-related crashes were defined as crashes in which at least one driver in the crash was driving too fast for conditions or in which exceeding the speed limit or excessive speed for conditions was listed by police as a cause of the crash

** Police vehicles themselves were also involved in 92 (14.6%) of these 630 collisions