

The Future of RESEARCH

The Future of RESEARCH

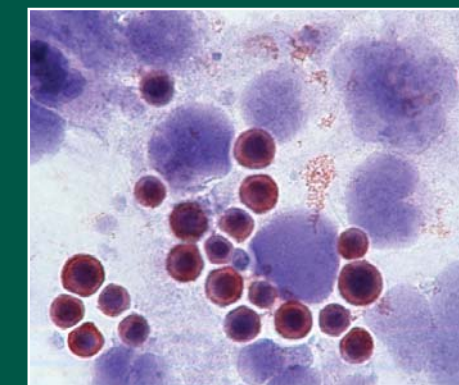
Research Funding

In FY2005, total research funding for Loyola University Chicago Stritch School of Medicine reached \$38.31 million, with \$29.25 million in federal funding and \$9.06 million from private sources.

Diagnosed with Stage IV melanoma, a young adult patient suffers from tumors that have spread throughout her body. She has not responded to traditional cancer-fighting treatments and is expected to live no more than six months. Research at Loyola proved otherwise.

Two years later, after participating in a melanoma vaccine clinical trial at Loyola University Health System, the young patient appears to be cancer-free.

Loyola researchers spent more than a decade developing the melanoma vaccine. Throughout the years, advances in research such as this have positioned Loyola as a premier research center.



In response to the melanoma vaccine, lymphocytes surround and kill the tumor cells.

*We are continually building on the discoveries of yesterday
to find the breakthroughs of tomorrow.*

For more information,
log onto www.meddean.luc.edu,
the Stritch School of Medicine Web site.

To talk with a gift officer about supporting the future of research
at Loyola University Health System and Stritch School of Medicine,
call (708) 216-3201.

The Future of RESEARCH

A rich flow of ideas and collaboration drive our understanding of how the human body works and lead to innovations that save and improve lives. Our multidisciplinary and comprehensive research programs are guided by our Jesuit heritage to pursue excellence as we advance the science of medicine.

Our team approach to research is a core part of our culture. Loyola University Chicago Stritch School of Medicine basic scientists and medical center clinicians exchange valuable knowledge gained in the laboratory and at the patient's bedside, commonly referred to as translational research. They work in unison to quickly translate the findings to patients through clinical trials giving our patients access to treatment options that are not yet available at other institutions. That crucial connection between researchers and physicians is what allows us to move toward new therapies and leading-edge treatments.

Our scientists and physicians are life-long learners. To them, it is not simply research, but an opportunity to positively impact the lives of our patients. Our research programs include training future scientists to ensure that vital research will continue for years to come.

While our research-intensive faculty is not as large as at other academic medical centers, we have consistently grown our research grant support. We are preparing to propel our research programs to unprecedented levels. With your help, the future of research at Loyola will bring new hope and healing to patients everywhere.

Richard H. Kennedy, PhD, senior associate dean for research at Stritch School of Medicine, is leading the effort to further expand Loyola's nationally recognized biomedical research programs.



Our RESEARCH Institutes



Burn and Shock Trauma Institute

The goal of the Burn and Shock Trauma Institute is to reduce the devastating effects of traumatic injury. Scientists and physicians devoted to the study of trauma injuries and burns comprise the institute. As a multidisciplinary research institute, programs include both clinical and laboratory research. In the laboratories, scientists investigate the human body's reaction to injury and infection with the hope that research findings will lead to new therapies for trauma and burn patients. Their work is complemented by our physicians who oversee regional burn and trauma centers, caring for more than 3,500 burn and trauma patients combined each year. Researchers in the Alcohol Research Program aim to discover why trauma patients who have consumed alcohol are more likely to sustain injuries than patients who have not and how these injuries can be prevented.

Cardiovascular Institute

The physicians and scientists at the Cardiovascular Institute strive to extend their knowledge about the development, treatment and prevention of all types of heart disease through basic science and clinical research. Through molecular research, clinical trials and investigational therapies, they conduct studies to gain new knowledge about the function of the heart and blood vessels and evaluate new treatments that restore health and prevent injury to the heart and vascular system. Patients have access to investigational medicines and treatments before they are widely available. Loyola is ranked as the number one heart and heart surgery program in Illinois by *U.S. News & World Report*[®], and our Cardiovascular Institute has helped us earn that distinction.

Leischner Institute

The goal of the Leischner Institute is to develop faculty as exemplary medical educators, design and implement innovative curricula and advance knowledge by measuring educational outcomes and researching medical education techniques. The York Fellowship gives teachers an opportunity to pursue projects that improve medical education by researching curriculum changes, teaching techniques and effective teaching practices. The Symposia to Advance Medical Education is a forum for teachers, researchers and

physicians to present ideas to peers on transforming medical education. The remaining two programs included in the institute are Teaching the Teachers, an initiative designed to provide new and experienced faculty with opportunities to gain expertise in critical evaluation and faculty-student interaction, and the Medical Education National Conference.

Neiswanger Institute for Bioethics and Health Policy

The primary values of the Neiswanger Institute for Bioethics and Health Policy are a regard for social justice and a commitment to understanding the roles of religion and spirituality in medicine. Institute faculty members conduct research and teach on issues that concern racial and ethnic disparities in health care, foster cultural humility and competence, contribute to global health, promote public health and advocate a renewal of medical professionalism.

Neuroscience Institute

Research at the Neuroscience Institute focuses on neurological disorders of the brain, spine, peripheral nervous system, and ear, nose and throat such as Parkinson's disease, senile dementia, Alzheimer's disease and autoimmune disease; and psychological disorders such as depressive illnesses, post-traumatic shock and substance abuse. Neurological disorders can be caused by a wide range of factors, from genetic abnormalities or immune system deficiencies, to injury to the brain or nervous system or diabetes. The institute scientists and clinicians aim to understand the root causes of neurological and psychological disorders and find new ways to help maintain the quality of life of our patients.

Oncology Institute

The mission of the scientists and clinicians working together in the Oncology Institute is to identify the causes of cancer and develop cures. The inherent collaboration between researcher and physician teams in a multidisciplinary setting helps achieve that mission. Our researchers recognize the need for our research findings to rapidly develop into new treatment and therapies for this patient population that often face advanced stages of the disease. To that end, they conduct numerous clinical trials in the hope of discovering alternative treatment options.

For more information about these institutes, log onto www.meddean.luc.edu, the Stritch School of Medicine Web site.